



Eliminate the need for on-site PCs or thick client software with VYKON Security.

VYKON Security enables authorized security administrators to manage credentials, access rights, access control, intrusion detection and alarm monitoring via a web browser interface from anywhere.

VYKON Security Family



Overview

VYKON Security™ by Tridium, is an open, web-based security management solution that allows you to manage and monitor your facility anytime, anywhere. Built on Tridium's Niagara^{AX}® Framework, VYKON Security integrates with any building automation system, enabling you to control lighting, HVAC equipment, and other building systems in response to access events and alarm conditions.

The heart of VYKON Security is the advanced IP-based controller that eliminates the need for on-site PCs or thick client software. VYKON Security enables authorized security administrators to manage credentials, access rights, access control, intrusion detection and alarm monitoring via a web browser interface from anywhere.

VYKON Security is built on the Niagara^{AX} Framework, the industry's leading automation infrastructure platform. This allows integration with your building control system via BACnet, Lonworks, and Modbus as well as supports enterprise connectivity through XML, SNMP, oBIX and HTTP.

Features

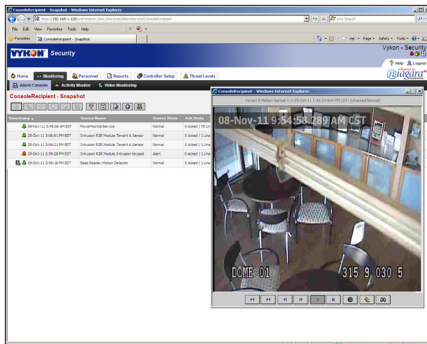
- Web-based security controller – easily managed via a web browser anytime, anywhere
- Connectivity to any facility system via BACnet®, LonWorks®, Modbus®, and oBIX
- Seamlessly integrates to HVAC, Lighting, and Energy Management Applications
- IT connectivity via oBIX, SNMP and HTTP
- No thick client software required
- Built on Tridium's highly successful Niagara^{AX} Framework, the industry's leading facility management software platform
- Open architecture, flexible platform solution
- Web User Interface serves rich presentations and live data to a browser
- Integrated management of access control, alarm monitoring, intrusion detection and credential database
- Pre-defined or custom reports on screen or exported and sent via email
- Custom graphic floor plans and equipment displays
- User-definable Wiegand card formats
- Elevator control
- Intrusion detection
- Access zone (advanced occupancy restrictions)
- Integrated Video provides bi-directional alarming. Allows video events to trigger system events, and tags video clips based on any point condition. Provides instant recall of alarm videos directly from the alarm console.
- Threat level management controls doors and modify access rights.



VYKON Architecture Solutions

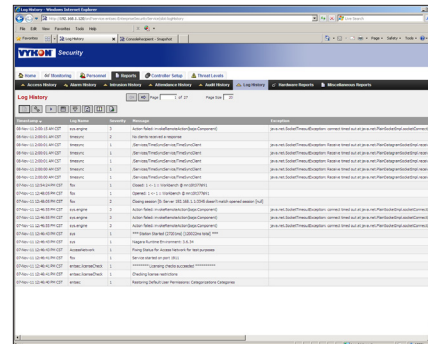


VYKON Security Appliance



Real Time Monitoring

Access real time alarm and activity monitoring from an intuitive console and quickly view facility graphical layouts to locate points of entry, exit and alarms. Facilitate operator response to system events with unique alarm point instructions and process events with pertinent notes to create a written record of events. Alarm video clips are available for instant viewing directly from the console interface.



Comprehensive Reporting

Historical data is easily searchable through a list of pre-defined reports and comprehensive ad-hoc reporting capabilities. Export results to comma separated value (CSV) format or standard PDF format utilizing flexible report styles to customize report layouts.

VYKON Security Family of Products



The VYKON Security product family consists of a Security JACE, reader modules, and I/O modules available in 3 different sized enclosures. The hardware modules support Wiegand style readers, supervised inputs, Form C relay-controlled outputs, and digital inputs. Enclosures are equipped with key lock, tamper switch, and in the medium/large enclosures, a power supply covered by a protective metal shield. Knockouts are provided on top, bottom and sides for external connections. The enclosure interior has generous space for cable management.



Security JACE (SEC-J-201 or SEC-J-601)

Web based, access control network controller that contains a web-server, embedded database, and VYKON Security application software. The controller includes capacity for 2 card readers and additional I/O for general purpose usage.



I/O Module (SEC-RIO)

Contains capacity for 8 supervised inputs and 8 relay outputs. The I/O Module can be utilized for monitoring intrusion sensors, elevator controls, or controlling doors which do not require a card reader.



Reader Module (SEC-R2R)

Supports 2 Wiegand style card readers and required I/O to support 2 doors. The I/O supports a door sensor, request-to-exit device, and strike for each door.



Intrusion Arming Keypad (SEC-INT-KP)

LCD display and keypad for arming and disarming Intrusion Zones. Display also provides feedback to the user regarding arming status and status of individual intrusion points.

Resource Capacities

Maximum Number of	SEC-J-201	SEC-J-601	SEC-J-601 with BAS Integration Driver
Personnel	5,000	20,000	10,000
Card Readers	16	32	16
Reader Modules	7	15 ¹	15 ¹
Security I/O Modules	8	15 ¹	15 ¹
Remote I/O Modules	N/A	4	4
Integrated Video Cameras	N/A	16	16
Schedules	25	100	100
Access Zones	10	50	50
Intrusion Keypads	2	6	2
History Records	10,000	50,000	50,000
Simultaneous System Users	5	10	10

¹ Max of 15 modules (combined reader and I/O) per JACE-601;

General Note: For systems requiring multiple controllers or greater than 32 readers, use enterprise security software platform.

Specifications

Part Number	Card Readers	Supervised Inputs	Relay Outputs	Digital Inputs
SEC-J-201	2	6	4	3
SEC-J-601	2	6	4	3
SEC-R2R	2	4	2	2
SEC-RIO	—	8	8	2

JACE-201 Platform

- PowerPC 405EP 250 MHz processor
- 128 MB SDRAM & 64 MB Serial Flash
- Battery backup
- Real-time clock

JACE-601 Platform

- PowerPC 440 524 MHz processor
- 256 MB DDR RAM & 128 MB Serial Flash
- Battery backup
- Real-time clock

Communications

- 2 Ethernet Ports – 10/100 Mbps
- 1 RS 232 Port (9 pin D-shell connector)
- 1 RS 485 Dedicated port for SEC-R2R and SEC-RIO modules (6 pin screw terminal)

Power Supply

- NPB-PWR-UN: 100-240 VAC, 50/60 Hz, 15VDC power supply module, 30 Watt

Operating System

- QNX RTOS
- IBM J9 JVM (Java Virtual Machine)
- Niagara^{AX}

Environment

- Operating temperature range: 0° to 50°C (32°F to 122°F)
- Storage temperature range: 0° to 60°C (32°F to 140°F)
- Relative humidity range: 5% to 95%, non-condensing

Agency Listings

- FCC part 15 Class A
- UL 294
- CE
- Canadian UL

Ordering Information

Part Number	Description	
SEC-J-201	<p>Security JACE-201. Includes connections for 2 Card Readers, 6 Supervised Inputs, 4 Form C Relay Outputs, and 3 Digital Inputs. Includes 128 MB RAM/64 MB Flash, 2 10/100 Mb Ethernet ports, (1) RS-485 serial port, (1) RS-232 serial port, and 2 communication card option slots. Contains removable screw terminal connectors, and status indication LEDs. The Security JACE is designed for DIN rail mounting.</p> <p>Supports up to 16 card readers, 5,000 personnel records and 10,000 transactional history records. Includes Niagara Security application, Web UI and the following standard drivers: oBIX Client / Server, Niagara Network (Fox) Client/Server and BACnet IP Server. Manufactured in the USA.</p>	
SEC-J-601	<p>Security JACE-601. Includes connections for 2 Card Readers, 6 Supervised Inputs, 4 Form C Relay Outputs, and 3 Digital Inputs. Includes 256 MB RAM/128 MB Flash, 2 10/100 Mb Ethernet ports, (1) RS-485 serial port, (1) RS-232 serial port, and 2 communication card option slots. Contains removable screw terminal connectors, and status indication LEDs. The Security JACE is designed for DIN rail mounting.</p> <p>Supports up to 32 card readers, 20,000 personnel records, and 50,000 transactional history records. Includes Niagara Security application, Web UI and the following standard drivers: oBIX Client / Server, Niagara Network (Fox) Client / Server and BACnet IP Server. Manufactured in the USA.</p>	
SEC-R2R	Reader Module. Includes connections for 2 Card Readers, 4 Supervised Inputs, 2 Form C Relay Outputs, and 2 Digital Inputs. Manufactured in the USA.	
SEC-RIO	Remote I/O. Includes connections for 8 Supervised Inputs, 8 Form C Relay Outputs, and 2 Digital Inputs. Manufactured in the USA.	
NPB-PWR-UN	Universal Power Supply. Universal 100-240 VAC IN, 15 VDC OUT 30 watt power supply.	
SEC-ENC-SML	Small sized Security Enclosure. Enclosure with DIN rail, tamper switch and key lock. Single 2 reader module only option available for this enclosure. Manufactured in the USA.	
SEC-ENC-MED	Medium sized Security Enclosure. Enclosure with DIN rail, tamper switch, key lock, universal power supply, and capacity for user provided SLA batteries. Configurable options include 1 Security JACE, 2 reader modules or 1 I/O module. Manufactured in the USA.	

Part Number	Description	
SEC-ENC-MNP	Same as above, but without the power supply. An additional SEC-R2R module may be installed in this enclosure. Note that a security JACE must always be installed in an enclosure with the NPB-PWR-UN power supply. Manufactured in the USA.	U. S. A.
SEC-ENC-LRG	Large sized Security Enclosure. Enclosure with DIN rail, tamper switch, key lock, universal capacity for user provided SLA batteries. Enclosure includes 2 DIN rails for additional Configurable options include 1 Security JACE plus 4 reader modules or 2 I/O modules, and several other combinations. Manufactured in the USA.	U. S. A.
SEC-ENC-LNP	Same as above, but without the power supply. Configurable options include 7 SEC-R2R modules, 2 SEC-RIO plus 3 SEC-R2R modules, 3 SEC-RIO plus 1 R2R modules, and several other combinations. Note that a security JACE must always be installed in an enclosure with the NPB-PWR-UN power supply. Manufactured in the USA.	U. S. A.
SEC-INT-KP	Intrusion Alarming Keypad. LCD display and keypad for arming and disarming Intrusion Zones. Requires 1 port on an optional NPB-2X-485 option card.	
IO-16-485	Includes 8 Universal Inputs, 4 Form A Relay Outputs, and 4 0-10 VDC Analog Outputs Contains removable screw terminal connectors, and status indication LEDs. Intended for DIN rail mounting. Requires 1 port on an optional NPB-2X-485 option card. Manufactured in the USA.	U. S. A.
NPB-2X-485	Dual Port RS-485 option card. Occupies one of two communication slots available on SEC-J-201 or SEC-J-601.	
NPB-LON	78 Kbps FTT 10 A LON® adapter. Uses one of the two communication slots on the SEC-J-601. Manufactured in the USA	U. S. A.
MPD-BAC	Multi-Protocol Driver to extend the standard SEC-J-601 to building automation applications which supports 60 BACnet devices, 5 Lon devices, 5 Modbus TCP devices, 5 Modbus RTU devices, and 5 SNMP devices. Required option cards are not included.	
MPD-LON	Multi-Protocol Driver to extend the standard SEC-J-601 to building automation applications which supports 60 Lon device, 5 BACnet devices, 5 Modbus TCP devices, 5 Modbus RTU devices, and 5 SNMP devices. Required option cards are not included.	
DR-SEC-BAC-MSTP	BACnet MS/TP Driver to extend the standard SEC-J-601 to building automation applications which supports 60 BACnet devices, 2000 points, 300 histories, and limits the Security JACE to 16 readers. Requires at least 1 port on an optional NPB-2X-485 option card.	
DR-SEC-BAC-TCP	BACnet TCP Driver to extend the standard SEC-J-601 to building automation applications which supports 60 BACnet devices, 2000 points, 300 histories, and limits the Security JACE to 16 readers.	
DR-SEC-LON-FTT	Lon Driver to extend the standard SEC-J-601 to building automation applications which supports 60 Lon devices, 2000 points, 300 histories, and limits the Security JACE to 16 readers. Driver includes 78 Kbps FTT 10 A LON® adapter (LON® Card).	
DR-SEC-MDB-RTU	Modbus RTU Driver to extend the standard SEC-J-6XX to building automation applications which supports 60 Modbus devices, 2000 points, 300 histories, and limits the Security JACE to 16 readers. Requires at least 1 port on an optional NPB-2X-485 option card.	
DR-SEC-MDB-TCP	Modbus TCP Driver to extend the standard SEC-J-6XX to building automation applications which supports 60 Modbus devices, 2000 points, 300 histories, and limits the Security JACE to 16 readers.	

Refer to VYKON 125 KHz and 13.56 MHz Card Reader Data Sheets for information on card readers .

Refer to VYKON Video Data Sheet for a complete list of Video Driver Options

Refer to SD Advanced Data Sheet and Camera Selection Guide for information on Video Equipment offered by VYKON.