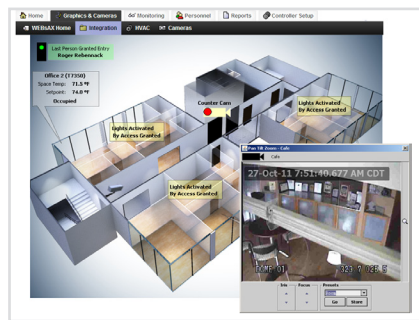




The VYKON Video solution is a comprehensive video model that works with digital video recorders, IP cameras, network video recorders, and video management solutions.

A single, Niagara integrated application provides in-depth review of the entire facility through a browser based user experience.

VYKON Video



Overview

VYKON Video is an open video framework solution designed to integrate diverse manufacturer devices and protocols into a unified, smart facility wide video management. Built on the Niagara^{AX} Framework[®], VYKON Video integrates with IP and analog based systems to create complete interoperability between video, security, lighting, energy management, and building automation for any facility.

The VYKON Video solution is a comprehensive video model that works with digital video recorders, IP cameras and network video recorders. The video model supports a bi-directional alarming interface allowing event driven communication between video and Niagara-based applications. The integrated alarm monitoring and video recall console allows system administrators to immediately review and assess video associated with alarm conditions. A single, Niagara integrated application provides in-depth review of the entire facility through a browser based user experience.

Features

- Bi-directional alarming interface between Niagara^{AX} stations and video products
- Niagara^{AX} alarms can initiate events in video subsystem
 - ◊ Automatically redirect camera and start video recording
 - ◊ Create video system alarm record and associate recorded video
- Video system events such as video motion detection and camera loss alarms can be processed as standard Niagara alarms
 - ◊ Video alarms available in Niagara alarm console with available hyperlink to event video
 - ◊ Initiate control logic sequences such as lighting control, building lockdown, etc.
- Ability to view live video through Niagara^{AX} graphical user experience
- Supports pan, tilt, zoom, iris, and focus camera control
- Query video subsystem for stored video and playback by time and date
- Integrated video playback with Niagara alarm console
- Customizable user experience through extensive video widget library (PX pages)
- Optional video routing through Niagara driver

Platforms Supported

- Driver requires Niagara^{AX} 3.5.34 and higher
- Video drivers available on Security and BAS platforms



Platforms Supported

Model	Part #	Restrictions
Enterprise Security	SEC-ENT, SEC-ENT-64, SEC-ENT-SBS	No Set Limit
AX Supervisor	S-AX	No Set Limit
AX Supervisor software for Red Hat Enterprise Linux 5	S-AX-LX	No Set Limit
AX Supervisor for 64 bit Window's platforms	S-AX-64	No Set Limit
AX Supervisor for Small Building System	S-AX-SBS	No Set Limit
SoftJACE	SJ-1M-AX	No Set Limit
Security JACE 6	SEC-J-601	Maximum of 16 cameras
JACE 6	J-600, J-602-XPR-24, J-602-XPR-24GW	Maximum of 16 cameras, requires NPM-256 memory option
JACE-7	J-700	Maximum of 16 cameras

Ordering Information

Part #	Description
Dedicated Micros Drivers & Licenses	
DR-S-DED-AX	Required base AX Supervisor license for Dedicated Micros driver. Includes support for up to 16 cameras.
DR-S-DED-4	Additional 4 cameras license for AX Supervisor Dedicated Micros driver. (DR-S-DED-AX above is prerequisite)
DR-DED-AX-4	Required base license for supported JACE platforms. Includes support for 4 cameras. Maximum of 16 cameras allowed on supported JACE platforms.
AXIS Communications Drivers & Licenses	
DR-S-AXS-AX	Required base AX Supervisor license for AXIS Communications driver. Includes support for up to 16 cameras.
DR-S-AXS-4	Additional 4 camera license for AX Supervisor AXIS Communications driver. (DR-S-AXS-AX above is prerequisite)
DR-AXS-AX-4	Required base license for supported JACE platforms. Includes support for 4 cameras. Maximum of 16 cameras allowed on supported JACE platforms.
Milestone Systems Drivers & Licenses	
DR-S-MLS-AX	Required base AX Supervisor license for Milestone driver. Includes support for up to 16 cameras.
DR-S-MLS-4	Additional 4 cameras license for AX Supervisor Milestone driver. (DR-S-MLS-AX above is prerequisite)
DR-MLS-AX-4	Required base license for supported JACE platforms. Includes support for 4 cameras. Maximum of 16 cameras allowed on supported JACE platforms.
Honeywell Rapid Eye Drivers & Licenses	
DR-S-RPD-AX	Required base AX Supervisor license for Honeywell Rapid Eye driver. Includes support for up to 16 cameras.
DR-S-RPD-4	Additional 4 cameras license for AX Supervisor Rapid Eye driver. (DR-S-RPD-AX above is prerequisite)
DR-RPD-AX-4	Required base license for supported JACE platforms. Includes support for 4 cameras. Maximum of 16 cameras allowed on supported JACE platforms.

Architecture

