

VYKONStat

Generation 2 Vykon Wireless Thermostat and
Improved Niagara AX Driver

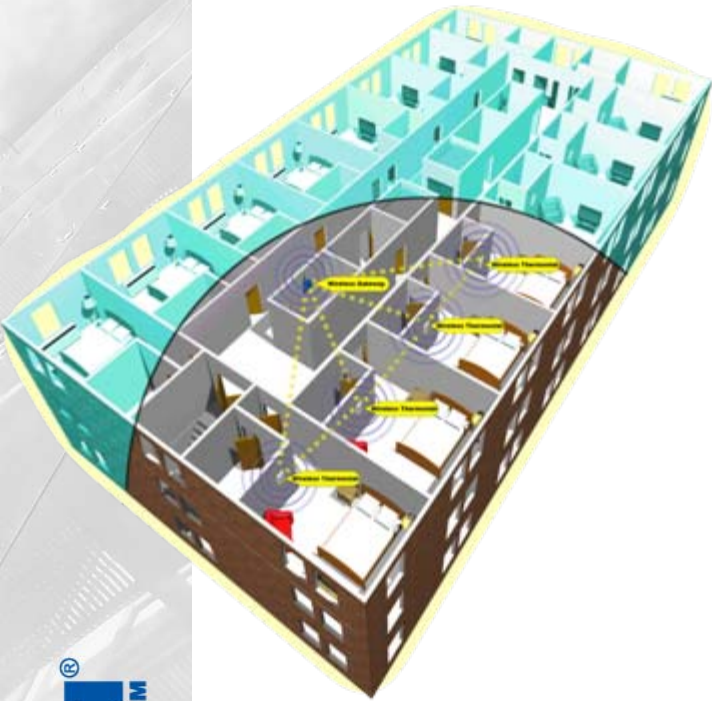
What Is Generation 2?

- Improved Thermostat Communication Card Software
- Increased set of available thermostat Objects
(see driver guide 028-6018 R1 Issue Date: June 15, 2010 for Read/Write table)
- Backwards Compatible with Gen1 VWG-40 platform
- Same physical size and location on thermostat, card tagged according to generation



Generation 2 Compatibility

Compatible to current V(T/TR/Z)7000 series wireless thermostats product line



- Fan coil units - VT73XX (F/C)
- Staging RTU- VT76XX(A/B)
- Heatpump – VT76XX(H)
- Simple area zoning – VT72XX(F/C)
- Line Voltage Fan Coil – VTR
- Zoning System - VZ72, VZ76

Generation 2 Compatibility

Generation 1:

Release 1, June 2009

Associated Jar Files Revision: WirelessStat.jar

Revision Level: 2.1, 2.1.1, 2.1.2, 3.1.3

Associated Displayed Driver Name: WirelessStatNetwork

Compatible Device Identification:

- Compatible VT7200 Series zone wireless controllers are identified with wireless module 051-0021 Rx
- Compatible VT7300 Series FCU wireless controllers are identified with wireless module 051-0021 Rx
- Compatible VT7600 Series staging wireless controllers are identified with wireless module 051-0022 Rx

Generation 2 Compatibility

Generation 2:

Release 2, September 2010

Associated Jar Files: WirelessTstat.jar, WirelessTstatDevices.jar

Revision Level: 4.0

Associated Displayed Driver Name: WirelessTstatNetwork

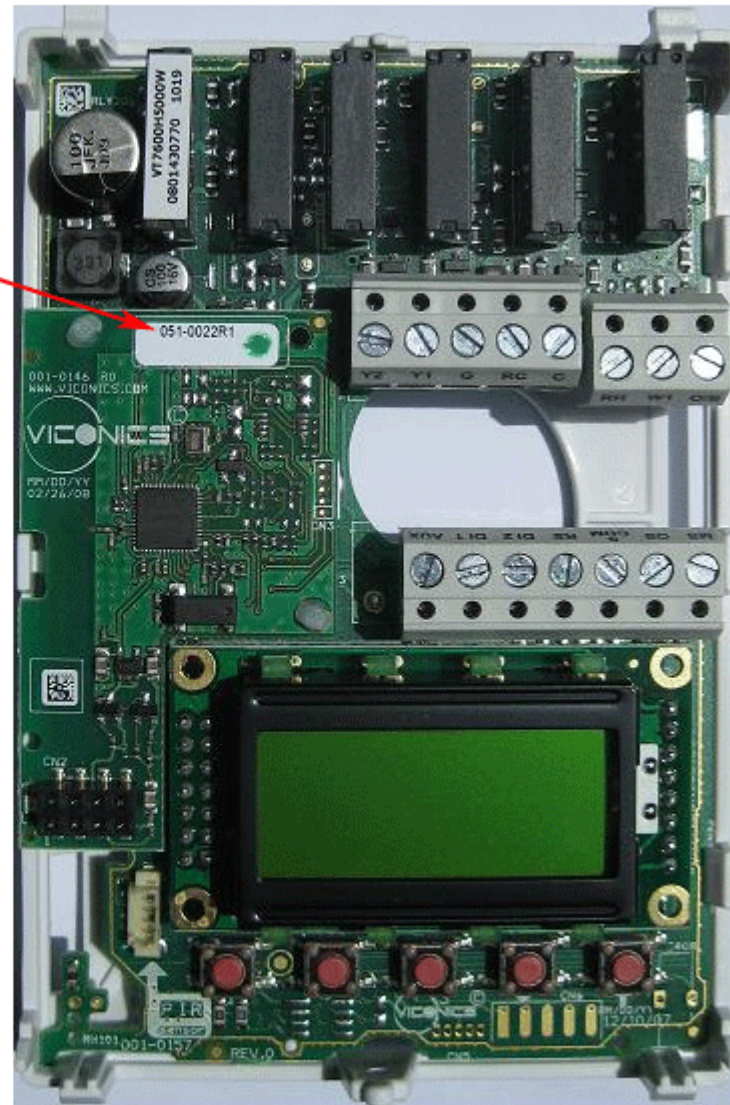
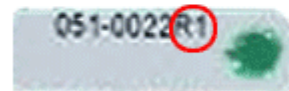
Compatible Device Identification:

- Compatible VT7200 Series zone wireless controllers are identified with wireless module 051-0083 Rx
- Compatible VT7300 Series FCU wireless controllers are identified with wireless module 051-0083 Rx
- Compatible VT7600 Series staging wireless controllers are identified with wireless module 051-0083 Rx
- Compatible VTR7300 Series FCU wireless controllers are identified with wireless module 051-0083 Rx
- Compatible VZ7200 Series zone wireless controllers are identified with wireless module 051-0070 Rx
- Compatible VZ7600 Series RTU wireless controllers are identified with wireless module 051-0071 Rx

Revision Number Location

The wireless communication module revision number is located on the upper right hand side of the communication module

The Device shown is a Release 1 VT7600
(Note the part number followed by R1)

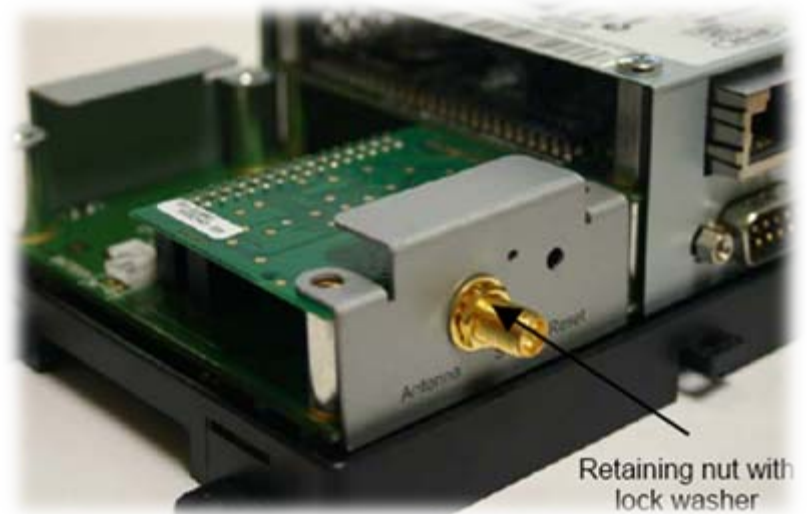
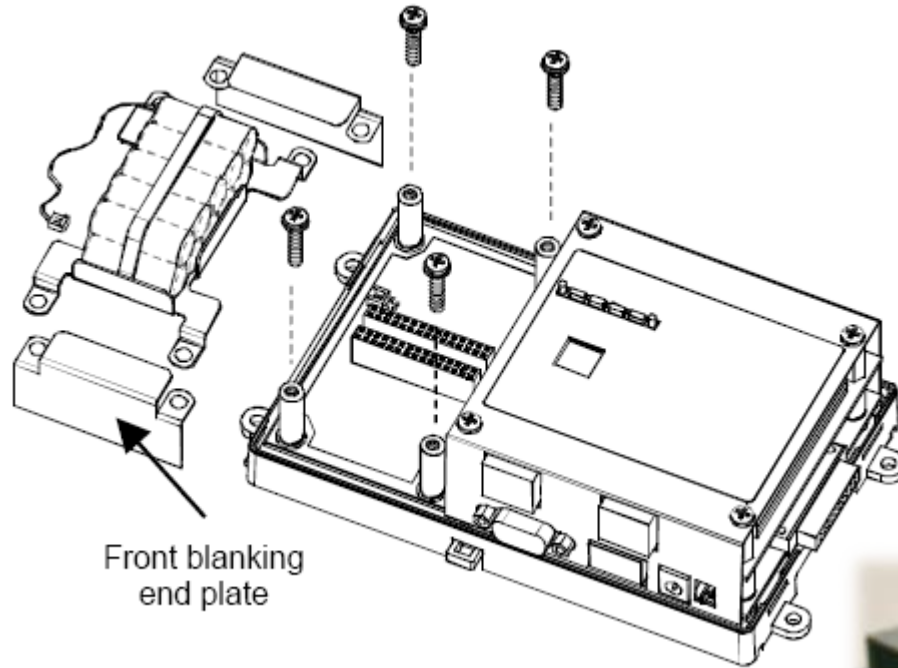


Improved Jace Option Card

- Jace Option Card VWG-APP-1028
Wireless communication card and newly updated WirelessTstatNetwork driver file have been specifically designed to be used by the Niagara AX® powered Jace controllers
- When utilized in conjunction with the wireless communicating thermostats, it offers the Niagara AX® integrator a simple way to integrate using the familiar Workbench tool set
- Improved distance
- Supports 50 devices (JACE 2)



Available Jace option card



Newly updated driver feature set

- Standard Niagara^{AX™} tuning policies
- Standard Niagara^{AX™} device and object health index
- Typical Niagara^{AX™} device & object manager
- Allows use of all Workbench^{AX™} “standard” features
- Enables recycling of your existing device templates

Physical Layer Settings

The screenshot displays the Niagara Workbench interface for configuring the Physical Layer settings of a WirelessStatNetwork. The left-hand navigation pane shows a tree view with 'Station (TestStation)' expanded to 'Config', 'Drivers', and 'WirelessStatNetwork'. The main window shows the configuration for 'WirelessStatNetwork (Wireless Stat Network)'. The settings are organized into several sections:

- Status:** Status is set to '{ok}'.
- Enabled:** Enabled is checked (true).
- Health:** Health is 'Ok [16-Apr-10 10:30 AM EDT]'. Sub-sections include:
 - Down:** Down is set to 'false'.
 - Alarm:** Alarm is set to 'false'.
 - Last Ok Time:** 16-Apr-2010 10:30 AM EDT
 - Last Fail Time:** 16-Apr-2010 10:22 AM EDT
 - Last Fail Cause:** Timeout while waiting for comm module re
- Alarm Source Info:** Alarm Source Info
- Monitor:** Wireless Stat Ping Monitor
- Tuning Policies:** Tuning Policy Map
 - Default Policy:** Tuning Policies
- Poll Scheduler:** Wireless Stat Poll Scheduler
- Retry Count:** 1
- Response Timeout:** 00000h 00m 03.000s [0ms - 3sec]
- Serial Port Config:** Serial port configuration
 - Status:** {ok}
 - Port Name:** COM1
- Cov Manager:** Wireless Stat Cov Manager
 - Cov Enabled:** true
 - Statistics Start:** 16-Apr-2010 10:22 AM EDT
 - Average Poll:** 26.16ms
 - Busy Time:** 0% (968ms/490sec)
 - Total Polls:** 37 over 968ms
- Wireless Parameters Config:** Zigbee parameters configuration
 - Status:** {ok}
 - Zigbee Pan Id:** 35 [0 - 500]
 - Zigbee Channel:** 12 [10 - 26]
- Communication Module Info:** Coordinator Communication Module Information
 - Zigbee Module Major Version:** 2
 - Zigbee Module Minor Version:** 0
 - Hardware Revision:** 4
- Address Info:** Coordinator Address Information
 - Zigbee Address:** 00 00
 - IEEE Address:** 00 1d 35 08 01 27 07 46

At the bottom right, there are 'Refresh' and 'Save' buttons.

Device Properties & Settings

The screenshot displays the Niagara Workbench interface. The main window shows the configuration for a device named 'VT7350F5x00W_91 (Wireless Stat Device)'. The interface is divided into several sections:

- Nav (Navigation):** A tree view on the left showing the project structure, including 'My Network', 'Drivers', and 'NiagaraNetwork'. The selected device is highlighted.
- Palette:** A list of components on the left, including 'alarm', 'AlarmService', 'MemoryAlarmService', 'AlarmClass', 'ConsoleRecipient', 'StationRecipient', 'LinePrinterRecipient', and 'Extensions'. 'alarm' is currently selected.
- Property Sheet (Main):** A detailed configuration area for the selected device, organized into sections:
 - Status:** Includes fields for Status (set to '(ok)'), Enabled (checked), and Fault Cause.
 - Health:** Shows 'OK [16-Apr-10 10:35 AM EDT]' and fields for Down (false), Alarm (false), Last Ok Time (16-Apr-2010 10:35 AM EDT), Last Fail Time (16-Apr-2010 10:34 AM EDT), and Last Fail Cause (Ping error: Thermostat address not in ta).
 - Alarm Source Info:** Section for Alarm Source Information.
 - Device Info:** Section for Device Model Information.
 - Address Info:** Section for Device Address Information, including Address (91), Zigbee Address (00 01), and IEEE Address (00 1d 35 19 71 ec 1e 54).
 - Communication Module Info:** Section for Device Communication Module Information, including Zigbee Module Major Version (0), Zigbee Module Minor Version (0), and Hardware Revision (0).
 - Wireless Signal Info:** Section for Wireless Signal Transmission Quality, including C R S S (0) and T R S S (0).
 - Points:** A list of sensor points for the 'Wireless Stat Point Device Ext', such as Room Temperature, Outdoor Temperature, Room Humidity, and various Setpoints.
- Buttons:** 'Refresh' and 'Save' buttons are located at the bottom right of the property sheet.

New peripheral products

VST5000W5028W

Field Wireless Survey Tools

Technical Literature:

VYKONStat Wireless Survey Tool User Guide



VRP5000W1028W

Wireless Repeater

Technical Literature:

VYKONStat Wireless Repeater Application Guide