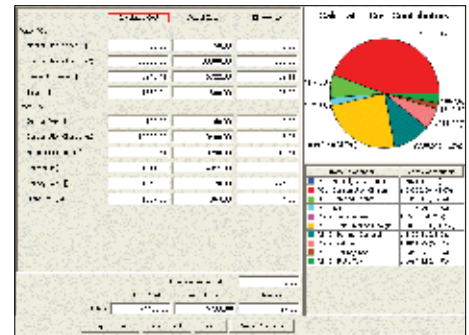


## Overview

Vykon® Energy Suite (VES), a comprehensive suite of applications, gathers, analyzes, and communicates up-to-date energy information anytime, anywhere. Built on the Niagara Framework®, VES enables users to gather data from diverse systems including utility meters, building automation systems, and mechanical and electrical systems. VES integrates common protocols including Modbus, BACnet, OPC, and LonWorks. In addition, VES provides a window into the energy portfolio with a web-based reporting suite.



## Applications

Vykon® Cost Profiler is a module in VES designed to help manage energy costs. Users can easily compare energy costs based on metered interval data and applicable rate structures to benchmark facilities, identify inefficiencies, implement changes, and measure results. Cost Profiler empowers an organization to proactively manage budgets, calculate accurate cost projections and reduce energy costs.

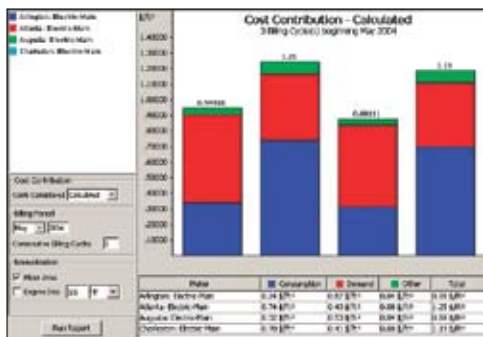
# Vykon Cost Profiler™ Data Sheet

### Supply-Side Benefits

Cost Profiler simplifies utility buying strategies. Users can compare different procurement strategies and rate structures without actually switching energy providers or rates. Energy managers can aggregate and disaggregate meters, try alternative rates, manipulate consumption and demand levels, and utilize a combination of rates on a single meter or group of meters. Cost Profiler also allows you to compare actual costs to a pre-determined budget with delta and variance from forecasts and helps take the risk out of energy procurement.

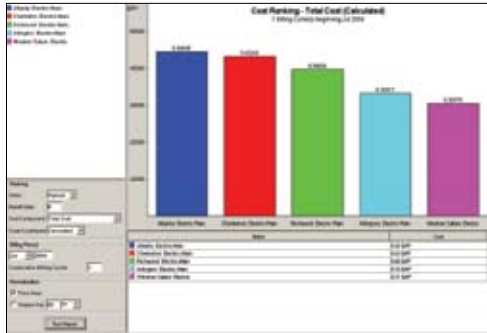


### Demand-Side Benefits



Identifying inefficiencies within or between buildings can be a daunting task. Relying on utility invoices and spreadsheets can be a monumental effort, especially when analyzing multiple accounts or meters. Cost Profiler provides comprehensive capabilities through a web-browser. By analyzing meter interval data, users can determine which sites have the highest costs, normalize for floor area and weather, and access the latest information. Cost Profiler helps identify and validate energy strategies at any time, from any location.

## Features



- Web-based application allows access from anywhere via any standard Web browser.
- Enables users to determine effects of alternate procurement strategies without actually switching rates or providers.
- Actively allows users to analyze the benefits of flattening loads by aggregating meters.
- Provides templates that help users manipulate consumption levels and determine “what if” scenarios.
- Permits users to change peak demand levels and re-compute costs based on alternative peaks and consumption patterns.
- Works with Niagara-based control systems to enable implementation of load shedding/shifting strategies.

## Vykon Cost Profiler Reports

**Invoice Reconciliation** – Compare utility invoices to calculated values to identify billing errors. Users can establish a historical baseline with manually entered data from utility invoices.

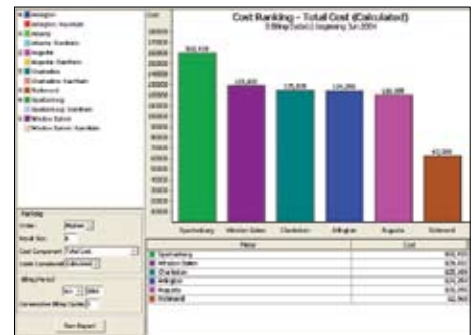
**Cost Contribution** – Determine how meters – whether sub meters within a building or main meters across an enterprise – contribute to the aggregate energy expense.

**Cost Ranking** – Rank meters to determine the most costly. Normalize data based on Outside Air Temperature and floor area.

**Budget Report** – Users can enter budgets or use historically generated data, then compare against actual costs. Make projections for reporting periods before it’s too late.

**What-if Analyzer** – Enables prediction of future costs. Users can manipulate consumption patterns and demand levels to project savings from various strategies.

**Rate Comparison** – Analyze alternative rates and energy providers. Determine the effect of an energy strategy before you implement it!



## Rates Modeler

The foundation of Cost Profiler is Create-a-Rate™, a sophisticated rates modeler that will handle many common rate types and rate components. Once a rate is added in Create-a-Rate, the thin client, web-based application provides fast and easy cost reporting using any standard browser. The What-If Analyzer empowers any energy manager to manipulate energy and rate variables to determine the effect on total costs, thereby determining project payback before making the investment.

## Ordering Information

- Runs on any Niagara Web Supervisor
- Basic VES Suite provides 10 point E2 Profiler and 2 meter Cost Profiler
- Add more meters as required:

CP-10	Cost Profiler for 10 meters
CP-50	Cost Profiler for 50 meters
CP-250	Cost Profiler for 250 meters
CP-500	Cost Profiler for 500 meters
CP-1000	Cost Profiler for 1000 meters
CP-2500	Cost Profiler for 2500 meters

[www.tridium.com](http://www.tridium.com)

### North America

3951 Westerre Parkway, Suite 350  
Richmond, VA 23233 USA  
1.804.747.4771 Phone  
1.804.747.5204 Fax

### Europe, Middle East & Africa

1 The Grainstore, Brooks Green Road  
Coolham, West Sussex RH13 8 GR UK  
+44 (0) 1403.740290 Phone  
+44 (0) 1403.741804 Fax

### Asia Pacific

101 Cecil Street, #10-11  
Tong Eng Building, Singapore 069533  
+65.6.887.5154 Phone  
+65.6.887.5342 Fax