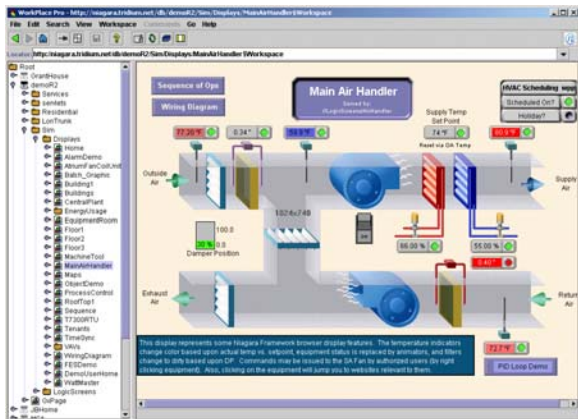


## Overview

Vykon®, powered by the revolutionary Niagara Framework®, is a suite of Java™-based products designed to integrate a variety of devices and protocols into a common distributed automation system. It incorporates the industry's first software technology to integrate LonWorks™, BACnet™, and various Internet standards in a common object model, embedded at the controller level and supported by a standard web browser interface. Vykon also includes integrated network management tools to support the design, configuration, installation, and maintenance of interoperable networks.

## Applications

The Vykon Web Supervisor® is a flexible network server for all connected JACE-NP®, JACE-511®, JACE-512®, or JACE-401® stations. The Web Supervisor is designed to harness the power of the Internet and provide efficient integration of standard open protocols, such as BACnet and LonWorks. The Web Supervisor creates a powerful network environment with comprehensive database management, alarm management, and messaging services. In addition, the Web Supervisor provides an engineering environment and graphical user interface.



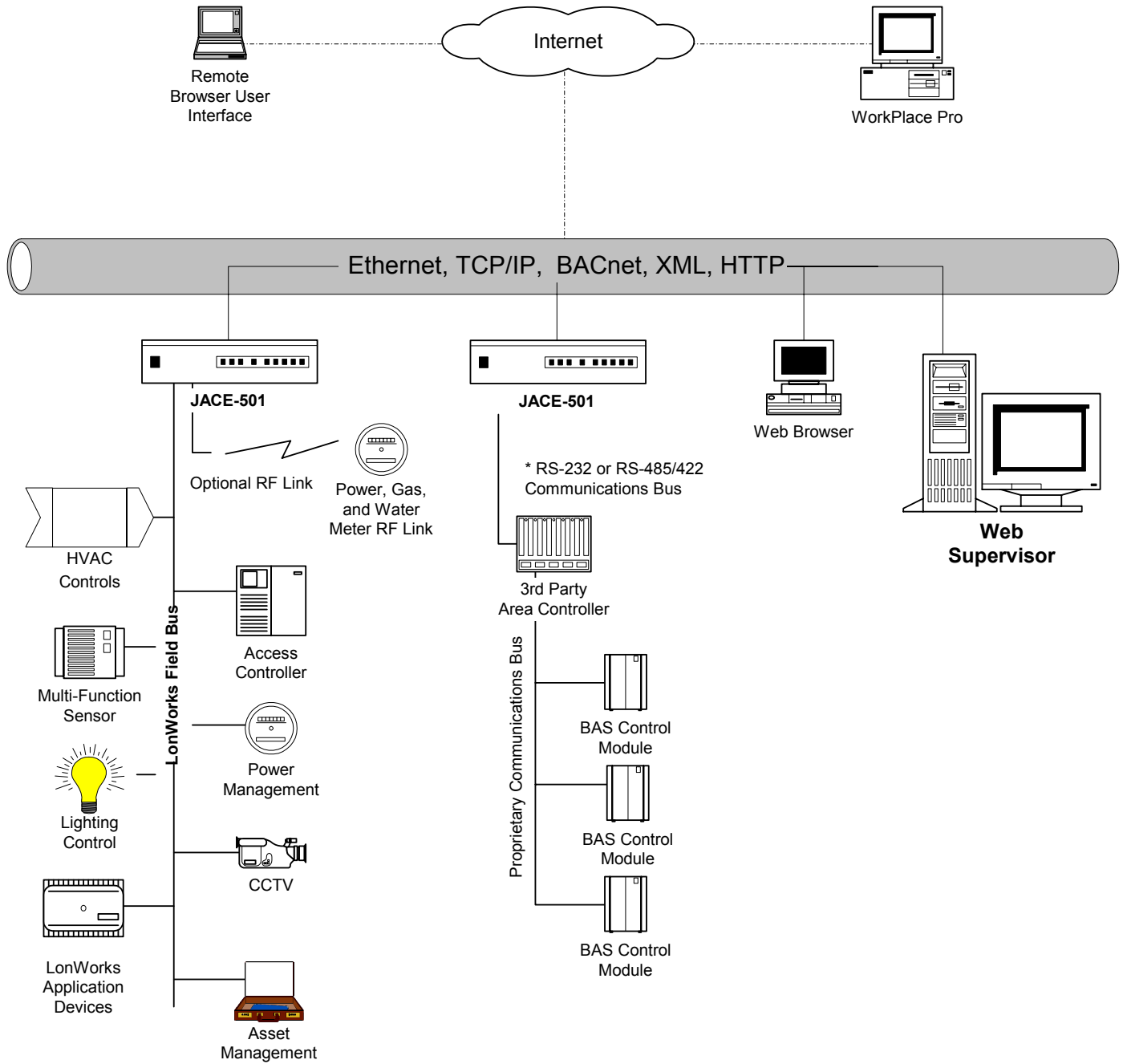
## Features

- Java-enabled user interface.
- Supports an unlimited number of users over the Internet/intranet with a standard web browser.
- Enterprise-level information exchange using an SQL database and HTTP/HTML/XML text formats.
- "Audit Trail" of database changes, database storage and backup, global time functions, calendar, central scheduling, control, and energy management routines.
- Sophisticated alarm processing and routing, including e-mail and paging.
- Provides access to alarms, logs, graphics, schedules, and configuration data with a standard web browser.
- Password protection and security using standard Java authentication and encryption techniques.
- HTML-based help system that includes comprehensive on-line system documentation.
- Supports multiple JACE-NP, JACE-511, JACE-512, or JACE-401 stations connected to a local Ethernet or the Internet.
- Provides online/offline use of the Niagara Framework WorkPlace Pro® graphical application configuration tool and a comprehensive Java Object Library.

## Web Supervisor® Data Sheet

## Platform Requirements

- **Processor:** Intel Pentium™ IV, 1 GHz or higher
- **Operating System:** Microsoft Windows™ NT 4.0 with Service Pack 4 or higher or Windows 2000™ or Windows XP Professional. Internet Explorer™ 5.0 or later, or Netscape Communicator™ 4.5 or later.
- **Memory:** 512 MB minimum
- **Hard Drive:** 1 GB minimum, 5 GB for applications that need more archiving capacity
- **Display:** Video card and monitor capable of displaying 1024 x 768 pixel resolution
- **Network Support:** Ethernet adapter (10/100 Mb with RJ-45 connecto
- **Modem:** 56 KB minimum, full time high speed ISP connection recommended for remote site access (i.e. T1, ADSL, cable modem)



[www.tridium.com](http://www.tridium.com)

**North America**

3951 Westerre Parkway, Suite 350  
 Richmond, VA 23233-1313  
 Phone 1.800.747.4771  
 Fax 1.800.747.4771

**Europe**

1 The Grainstore, Brooks Green Road  
 Coolham, West Sussex, RH 13 8GR, UK  
 Phone +44 (0) 1403.740290  
 Fax +44 (0) 1403.741804

**Asia Pacific**

101 Cecil Street #10-11  
 Tong Eng Building, 069533  
 Phone +65.6.887.5154  
 Fax +65.6.887.5342