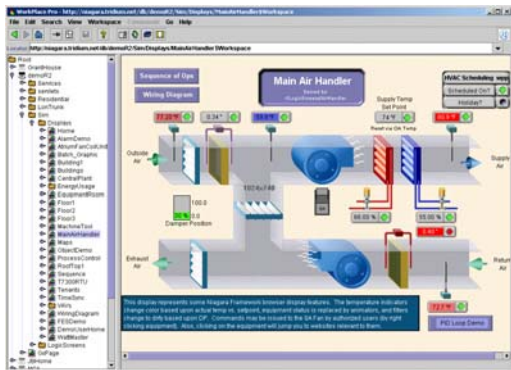


## Overview

Vykon™, powered by the revolutionary Niagara Framework®, is a suite of Java™-based products designed to integrate a variety of devices and protocols into a common distributed automation system. It incorporates the industry's first software technology to integrate LonWorks™, BACnet™, and various Internet standards in a common object model, embedded at the controller level and supported by a standard web browser interface. Vykon also includes integrated network management tools to support the design, configuration, installation, and maintenance of interoperable networks. WorkPlace Pro® is supplied as an integral part of the Vykon Web Supervisor™.

## Applications

The Vykon WorkPlace Pro is a comprehensive set of engineering tools combined into one common, easy-to-use graphical-based engineering environment. The Niagara Framework simplifies the complexity of working with multiple protocols by consolidating them into one common object model. Everything a user needs to manage and integrate multiple protocols is available in one, powerful engineering toolkit.

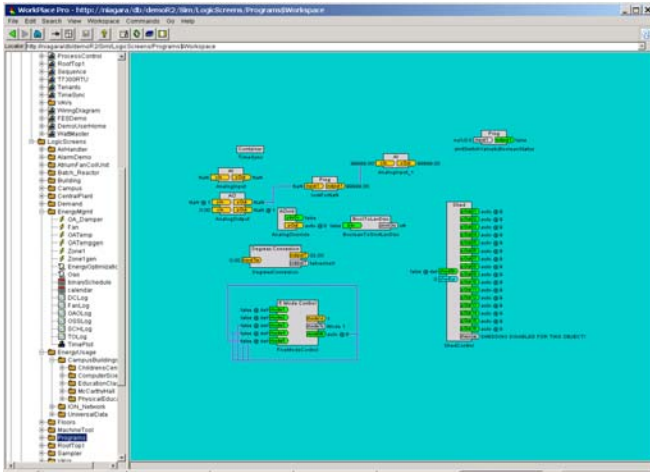


## Features

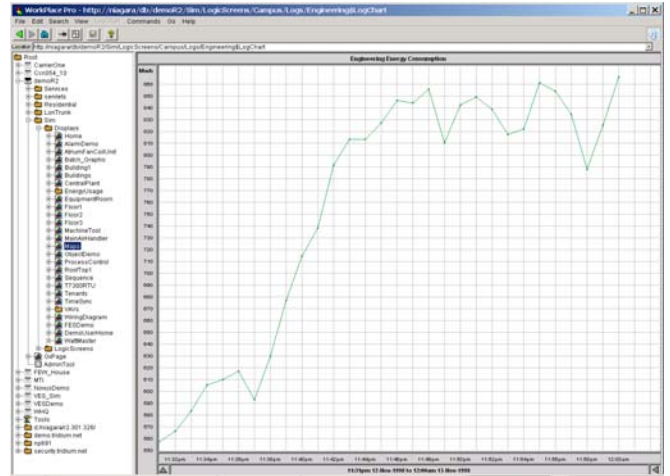
- Java-enabled user interface.
- Fast application development with a pre-assembled common object library.
- Easy-to-use, powerful programming language for custom applications.
- Automatic “learn” feature for LonWorks and BACnet based devices.
- Comprehensive network management tool for LonWorks based devices.
- Graphical engineering environment for easy application creation using “graphical” Java objects plus the ability to configure and test control application logic and user interface graphics.
- Simple, common linking mechanism allows for transparent data sharing between devices of the same or differing protocols.
- “Audit Trail” of database changes, database storage and backup, global time functions, calendar, central scheduling, control, and energy management routines.
- Easy to use “tree” diagram for access of all database structure and elements.

## WorkPlace Pro® Data Sheet

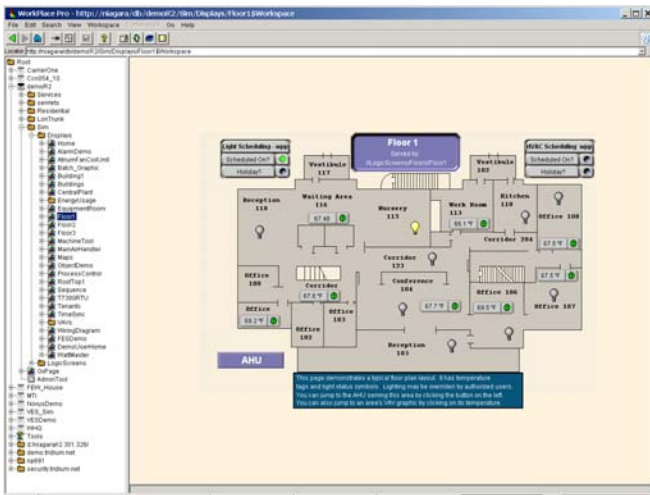
- Sophisticated alarm processing with a separate “window” for alarm and alert monitoring and routing, including e-mail and paging.
- Provides a tool for administration of password protection and security using embedded security in each Java object.
- HTML-based help system that includes comprehensive on-line system documentation.
- Connects to multiple JACE-NX/JACE-4XX/JACE-5xx stations connected to a local Ethernet or the Internet.
- Enables database creation online or offline.
- Extensive animation features for data/status displays in graphics.
- Library of graphical images and standard HVAC backgrounds included for use in creating graphics.
- Comprehensive administration tool included to manage JACE controller's IP addresses, backup and restore databases, and setting the JACE real-time clock.
- WorkPlace Pro is included as an integral feature of the Vykon Web Supervisor; additional copies may be purchased for multiple workstation environments.



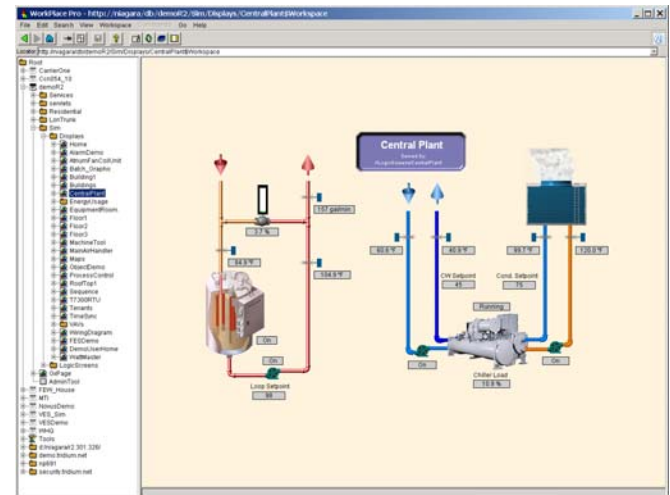
Typical logic screen



Typical trend log screen



Typical floor plan graphic



Typical boiler graphic

[www.tridium.com](http://www.tridium.com)

**North America**  
 3951 Westerre Parkway, Suite 350  
 Richmond, VA 23233-1313  
 Phone 1.800.747.4771  
 Fax 1.800.747.5204

**Europe**  
 1 The Grainstore  
 Brooks Green Road  
 Coolham, West Sussex, RH13 8GR, UK  
 Phone +44 (0)1403 740290

**Asia Pacific**  
 101 Cecil Street #10-11  
 Tong Eng Building, 069533  
 Phone +65.6.887.5154  
 Fax +65.6.887.5342