

VYKON User Experience

Powered by Reflow

PRODUCT DEFINITION

Now offered through VYKON, NiagaraMods Reflow streamlines and modernizes custom UI development within the Niagara Framework®. No additional setup time is required for Niagara users to work with Reflow. A Reflow UI provides server-level functions for a network of JACE, Niagara Edge and other field devices. Pick impactful graphics out-of-the-box to build your desired experience for specific use cases, user roles or building and/or space type. Responsive HTML5 design patterns ensure that users have great experiences across all devices.

Reflow is specifically designed to enable the Niagara Community of UI developers to work more efficiently and to ensure their design concepts are easy to port to all use cases and easy to maintain over the long run. UI design with Reflow starts by importing configuration files directly from Niagara Framework. As you work, you can save multiple versions of your designs for client review. UI designers can easily switch between design concepts as they create custom content for specific use cases including executive overviews, energy dashboards, and kiosk displays. Any Niagara view can be embedded into a dashboard. In addition, Reflow offers hundreds of beautiful icons for use in station graphics.

key features

- **Responsive HTML5:** a NiagaraMods Reflow design provides a consistent experience whether you are using a mobile device or PC.
- **Intuitive:** Customize and configure a UI with ease.
- **WYSIWYG:** Config panel renders changes to UI as you make them
- **Enhanced Alarm Console:** Reflow reads Niagara alarms and can show and hide specific alarm classes and priorities as needed
- **Reduce labor:** Reflow will automatically match point names on devices and link them to graphics if you project has consistent point names.
- **Embed Niagara Px Views:** Niagara Px views can be directly embedded into a Reflow graphic.
- **Floor Plan Editor:** Full-featured graphics editor to create beautiful and easy-to-interpret floor plan views
- **Easy Dashboarding:** Reflow dashboard menus and modules present Niagara data in the most compelling way, via light or dark background.

NiagaraMods Reflow connects Niagara data to stunning graphics, delivering a modern look and feel. With Reflow, you can deliver an immersive experience to every screen your customers use.



PRODUCT FEATURES

ALARM CONSOLE DESIGN

A Niagara alarm console designed with Reflow shows and hides specific alarm classes and priorities as needed. End users have the same experience whether they are viewing on their desktop PC or a mobile device.

TRENDING

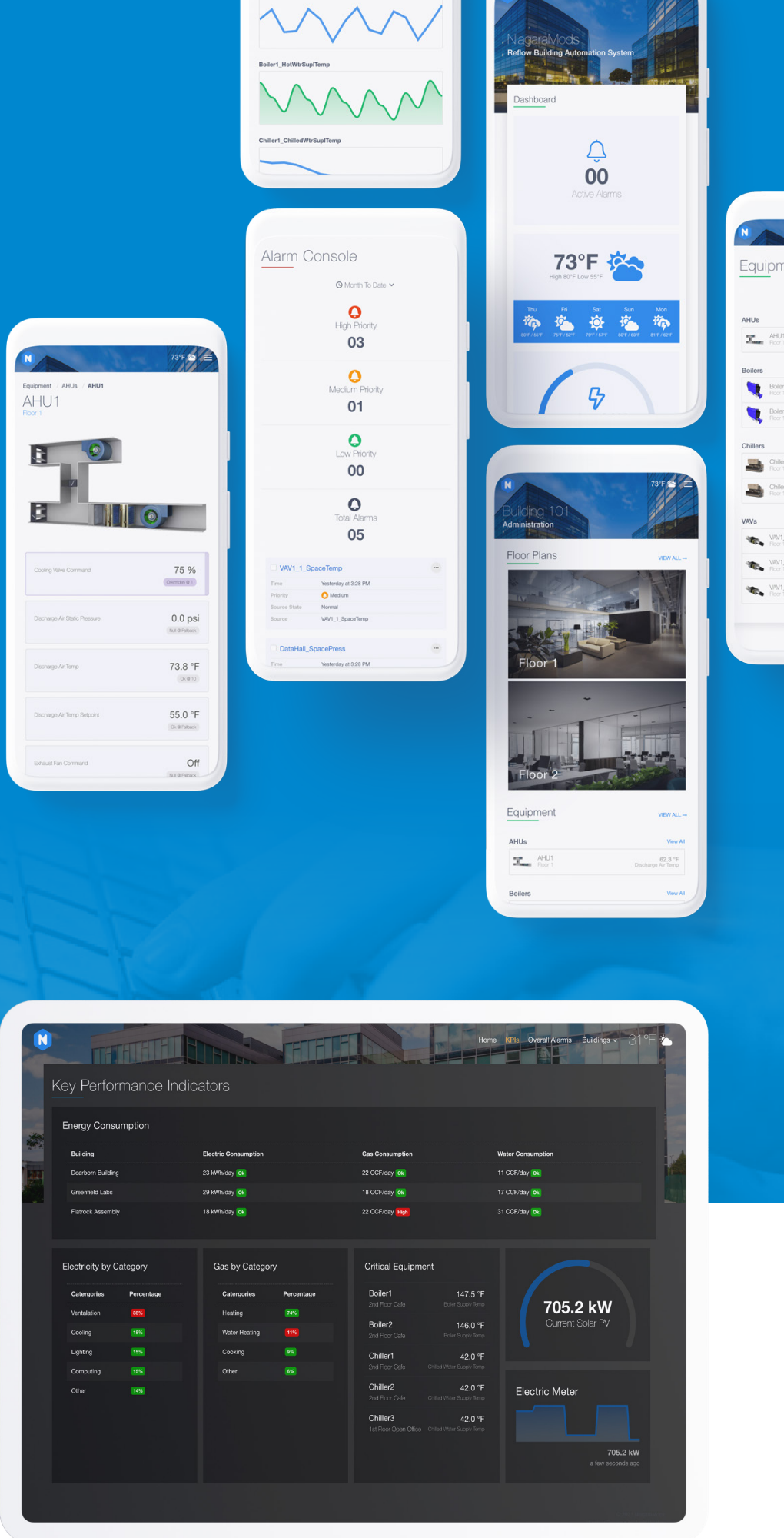
Reflow automatically pulls in historical trends from a Niagara station and allows you to group and feature them in a way that makes sense to the end user. The Chart Builder in Reflow allows end users to plot multiple data points on five different chart types. Users can export chart images and CSV data files.

EQUIPMENT GRAPHICS

Start-up is quick and easy when you can leverage preloaded point lists and page layouts from Niagara using Reflow's tools. From an imported Niagara CSV file, Reflow automatically matches point names on devices and links them to equipment graphics and floor plans.

DASHBOARDING

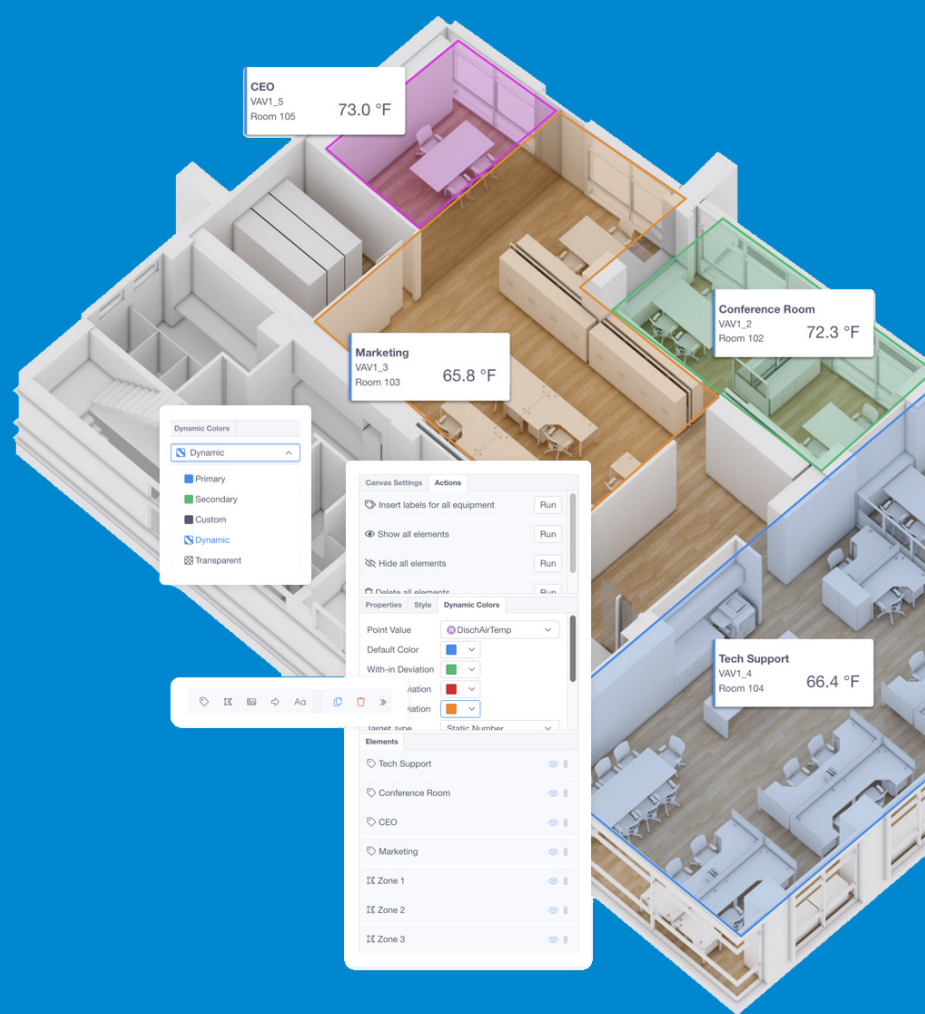
Reflow supports the creation of intuitive dashboards for any screen size with options to create light and dark pages. Choose from more than ten types of unique dashboard cards to display important data at glance.



PRODUCT FEATURES

FLOOR GRAPHICS

Reflow's fully featured graphics editor enables users to easily draw zones and arrows; insert images, labels, and text boxes; and set colors based on Niagara points. Users have full control over each element including visibility, z-order, and mobile behavior. Built-in actions enable UI designers to perform tasks with high efficiency. For example, one of Reflow's actions creates and links a label for each device assigned to the floor.



SCHEDULES

Quickly search for relevant schedules. Allow customers to access all their station schedules in one place and make changes with the familiar Niagara schedule editor. Reflow automatically pulls in all schedules on your station, allowing you to show or hide schedules to any specific end-user role as appropriate.

WEATHER DATA

Reflow uses AerisWeather for weather data including current conditions, forecasts, and live precipitation maps. For this feature to work, the station must have internet connectivity and be able to connect with the weather data provider host.



SECURITY

Reflow inherits the Niagara security model making it as secure as Niagara itself. It respects native user roles and privileges.



ICON LIBRARY

Thousands of beautiful icons from sets including FontAwesome and Ionicons are available to use in your station graphics.



MOBILE NAVIGATION

Your site's navigation transforms automatically to give your customers the experience they expect on their mobile devices.

SYSTEM REQUIREMENTS

Platform: JACE 8000 or Niagara Supervisor. Refer to the Niagara 4 Supervisor Data sheet for supervisor platform requirements.

Niagara Compatibility: Niagara version 4.6 or later.
Memory: Reflow's module size is approximately 6 MB. It is recommended to have 8MB of free space on your station's file system before installation and to keep at least 3MB of file space free while using Reflow. Note that if your station is already at maximum memory or CPU capacity, adding any module, including Reflow, may be detrimental to your system

Weather data: Active internet connection and authorization to connect via HTTPS to weather.niagaramodules.com. This connection is made in the end user's web browser and will have no impact on station performance

LICENSE SYSTEM

Reflow licensing is consistent with other Niagara licensing when purchased through VYKON. Add Reflow license options directly to your Niagara license just like you'd add any other license option offered by VYKON. Your VYKON demo license is enabled to run Reflow in the demo mode.

The link to Reflow's download site is available on the Niagara Community VYKON page.

ORDERING INFORMATION

Material number	Material Description
RF-SITE	Site Graphic Package for JACE or SUPERVISOR includes license for unlimited buildings, unlimited floors, unlimited pages, 50 device graphics and weather maps
RF-DEVICE	Adds 1 Device to Graphics Package Site License
RF-Building	Adds 1 Building to Graphics Package for Supervisor or JACE Pro

To learn more about how to purchase, install and start using NiagaraMods Reflow, contact your VYKON partner.



© 2022 Tridium Inc. All rights reserved. All other trademarks and registered trademarks are properties of their respective owners.

Information and/or specifications published here are current as of the date of publication of this document. Tridium, Inc. reserves the right to change or modify specifications without prior notice. The latest product specifications can be found by contacting our corporate headquarters, Richmond, Virginia. Products or features contained herein may be covered by one or more U.S. or foreign patents.