



A NEW BAS EXPERIENCE

Reflow connects BAS data to modern interface elements that work across every screen size.





RESPONSIVE BUILT-IN

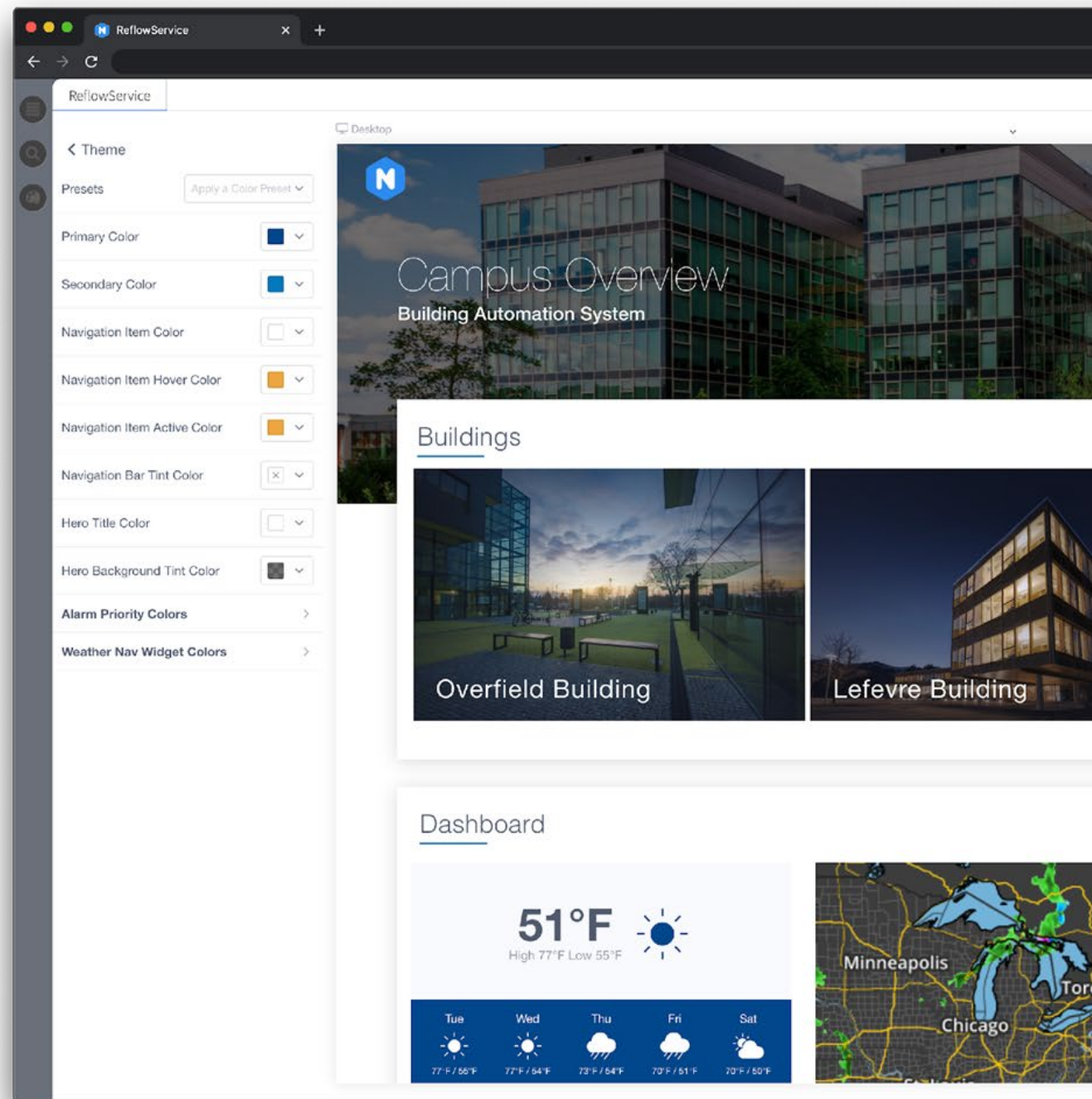
People expect their data to be available on all their devices – the building automation system is no exception.





CONSISTENCY MATTERS

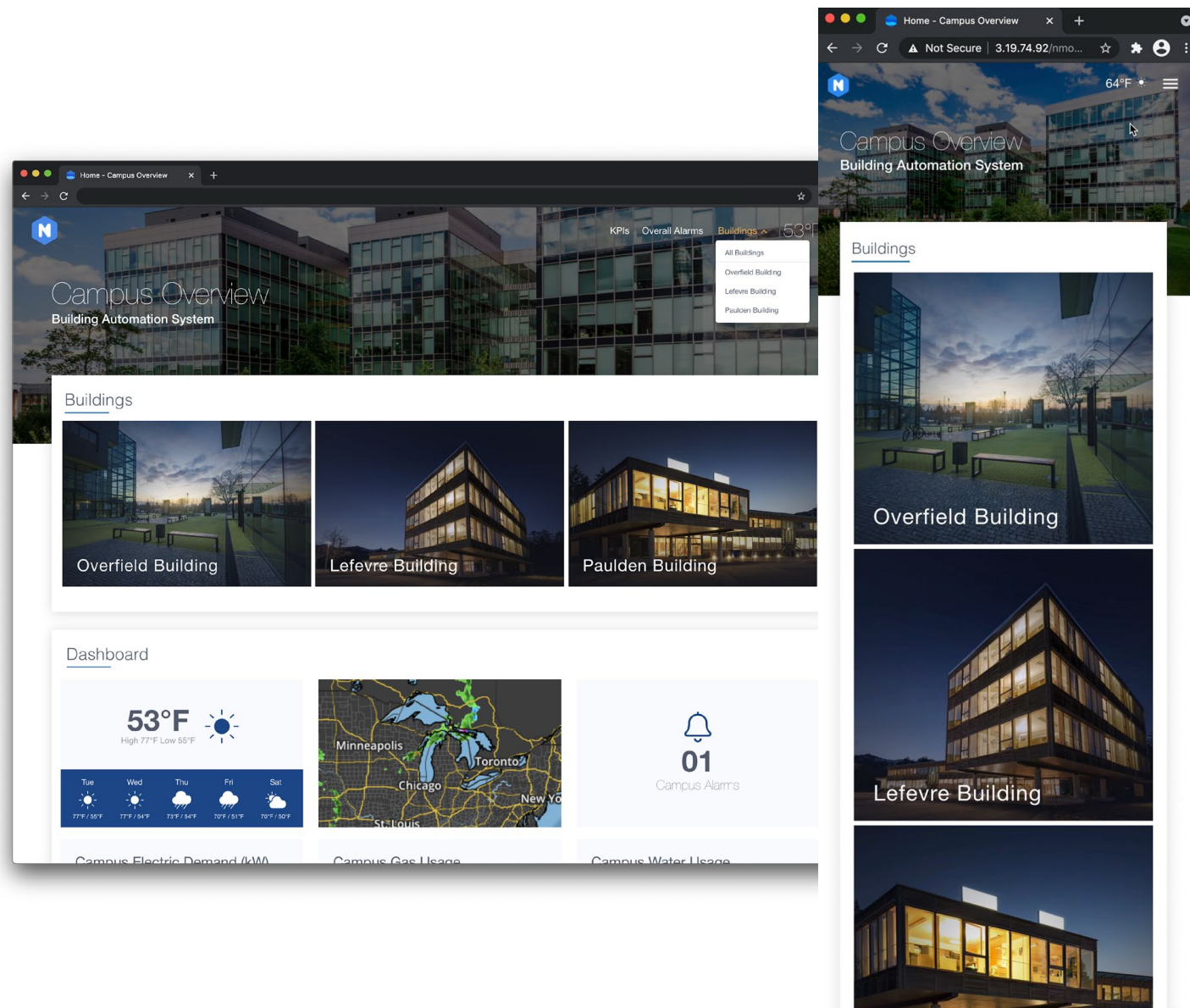
Reflow pulls your brand and navigation through the entire experience – ensuring consistency across every dashboard, building, and device.





POWERFUL NAVIGATION

Modern menus tailored to your system. The navigation automatically changes to a mobile experience on smaller screens.

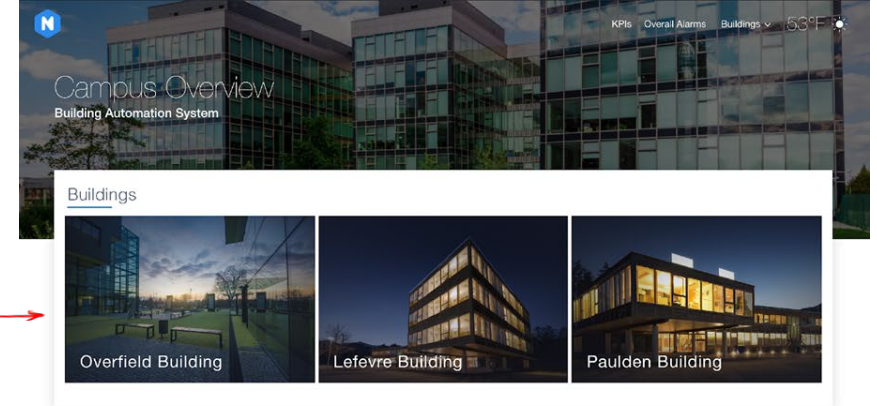




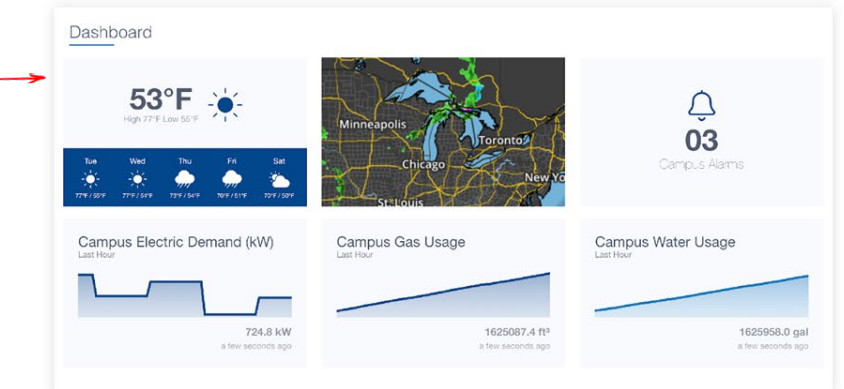
LANDING PAGE OPTIONS

The Landing Page provides a quick overview of your system and allows users to easily dive into other sections of the system.

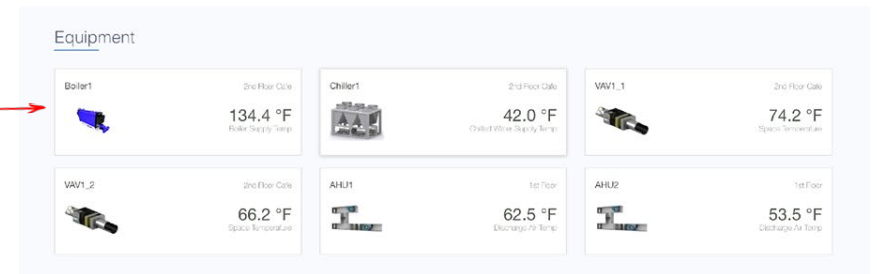
Buildings Widget



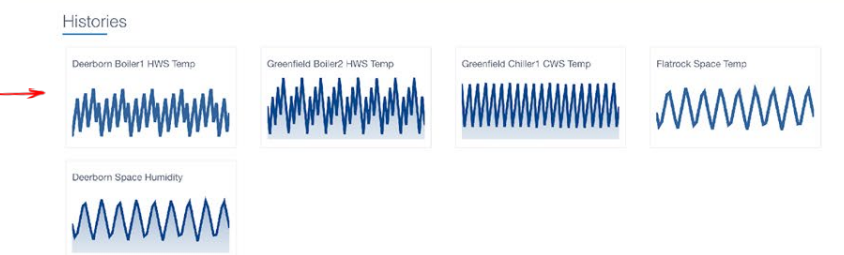
Dashboard



Featured Equipment



Featured Histories

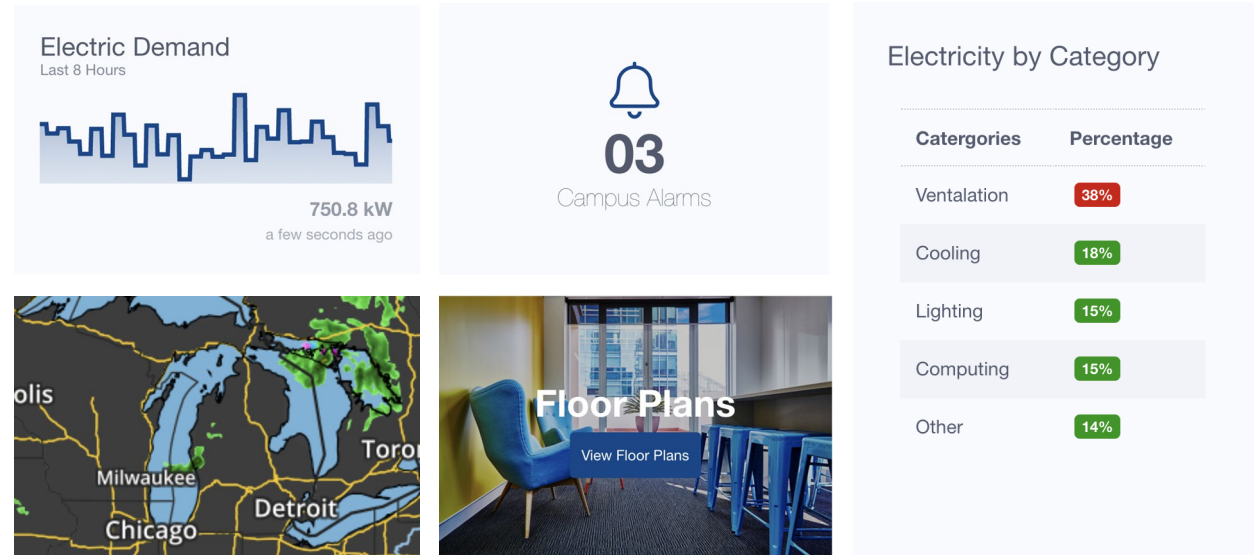




DASHBOARDS

In Reflow, Dashboards are everywhere – including the Landing Page, on Buildings, and in custom pages.

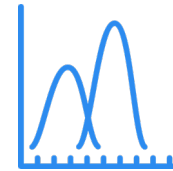
Reflow has a card type for any need and makes it easy to build completely custom cards.



CARD TYPES



Alarms



Charts



Tables & Lists



Gauges

72°

Points



Weather Display



Custom



BUILDINGS

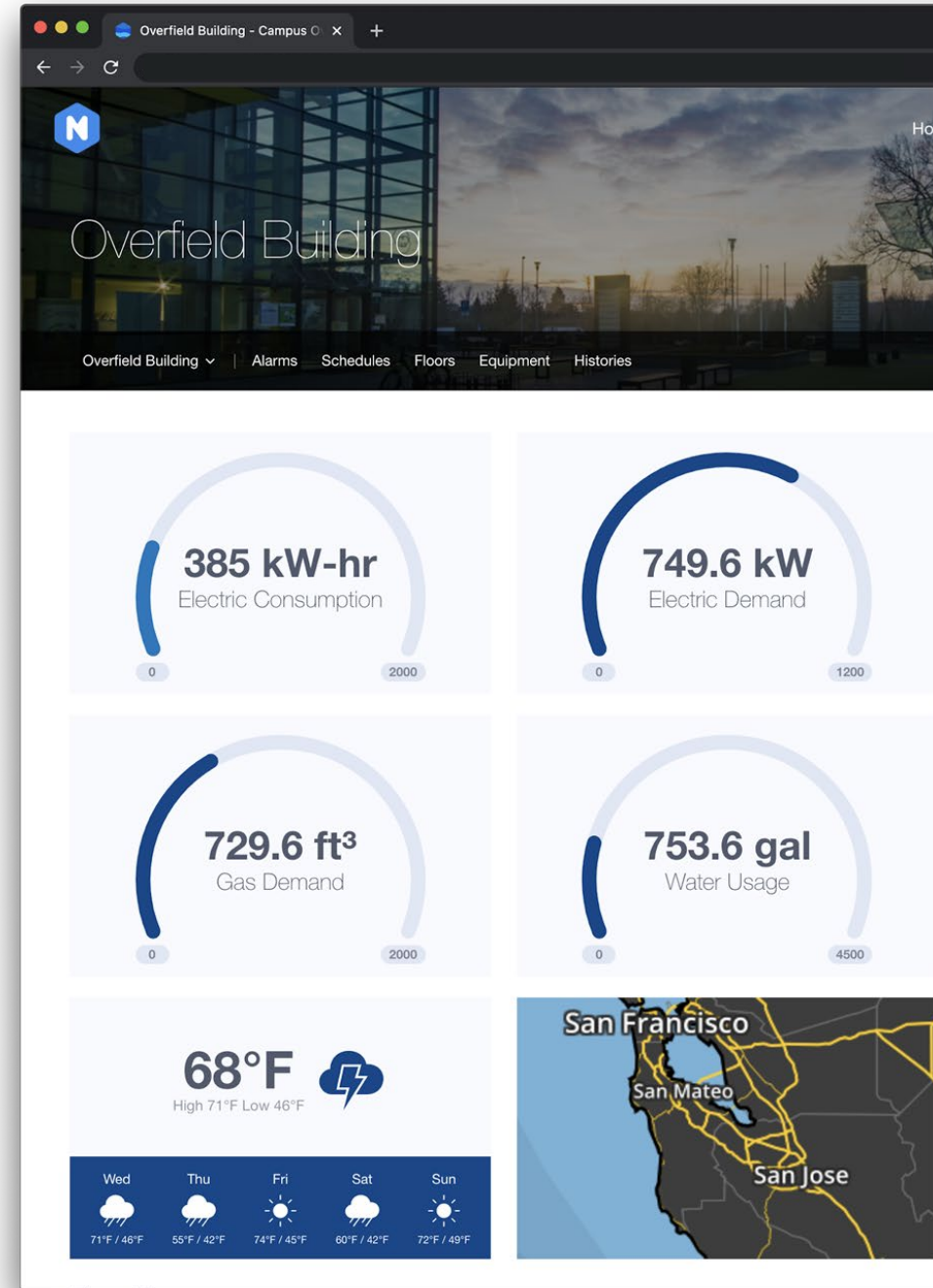
Each building in your system has its own page with a dashboard and quick access to building-specific data for alarms, devices, floor plans, histories, and schedules.

Reflow provides the same top-notch user experience for sites with one or many buildings.

Building Specific
Hero Image

Building Specific
Sub Nav

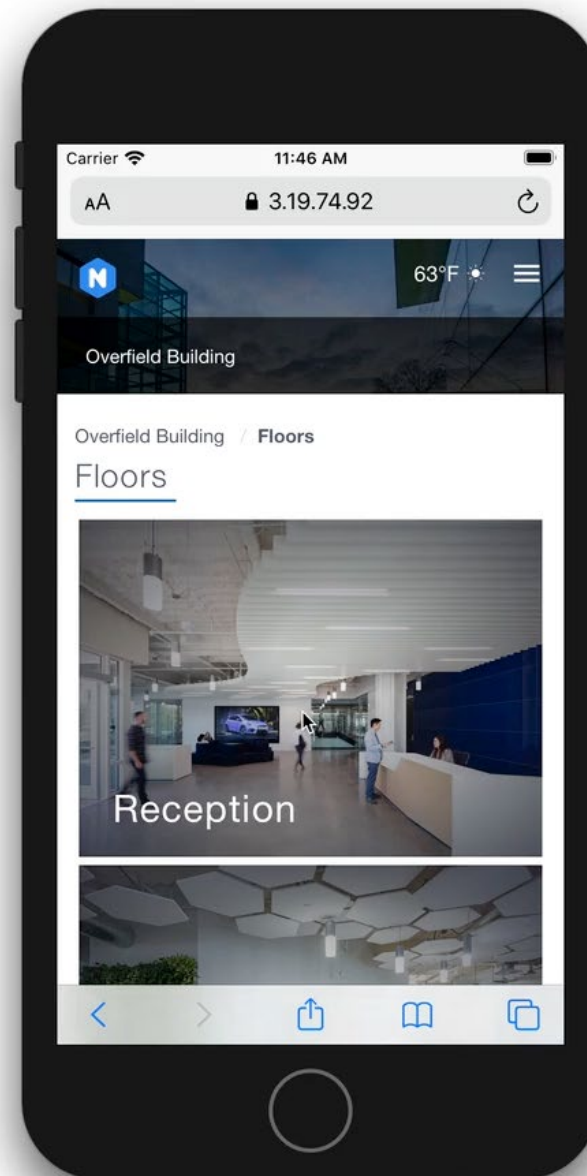
Building Specific
Dashboard





FLOORS

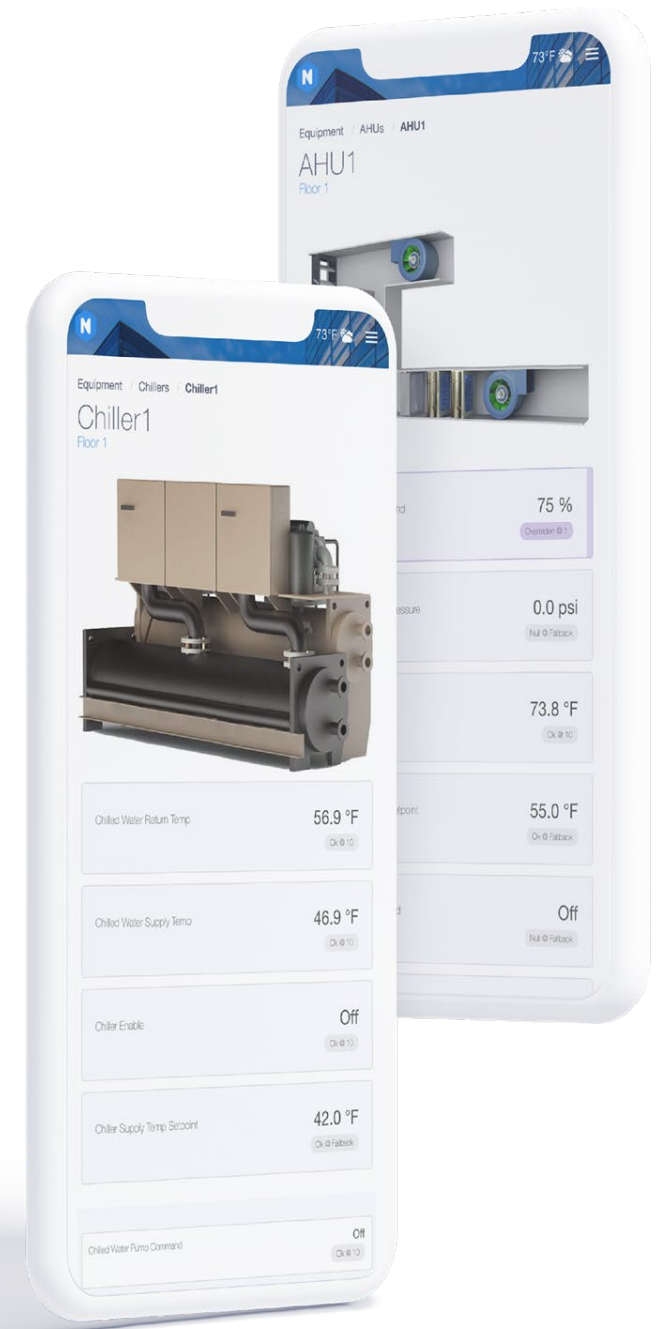
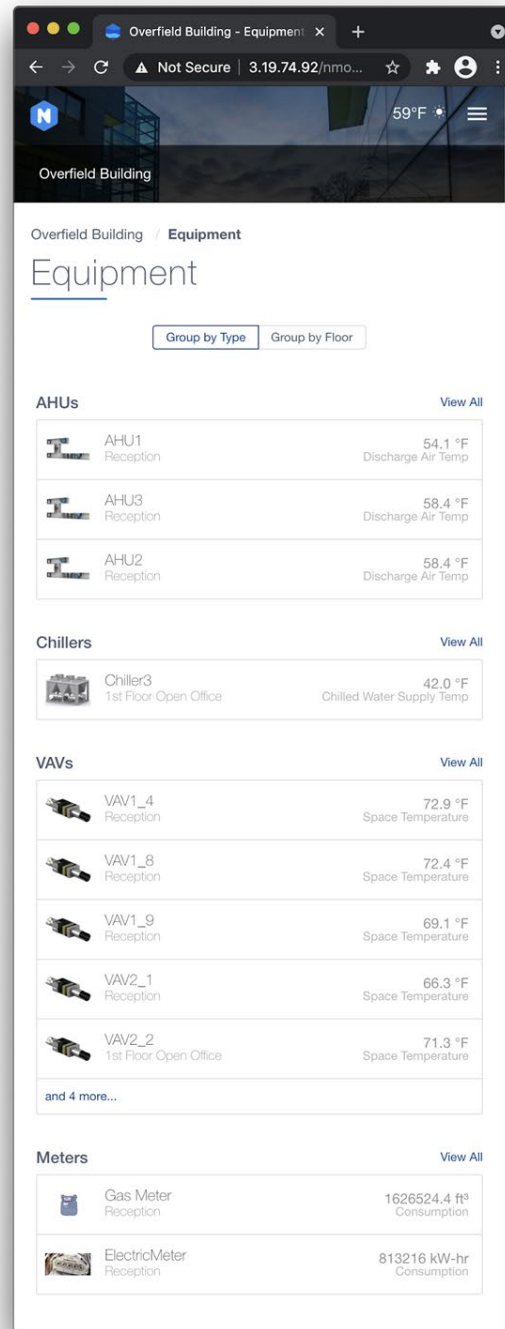
View floor plans in all new ways including the ability to zoom in and out. On mobile, get your data in a concise format or rotate your device to view the entire map.





DEVICES

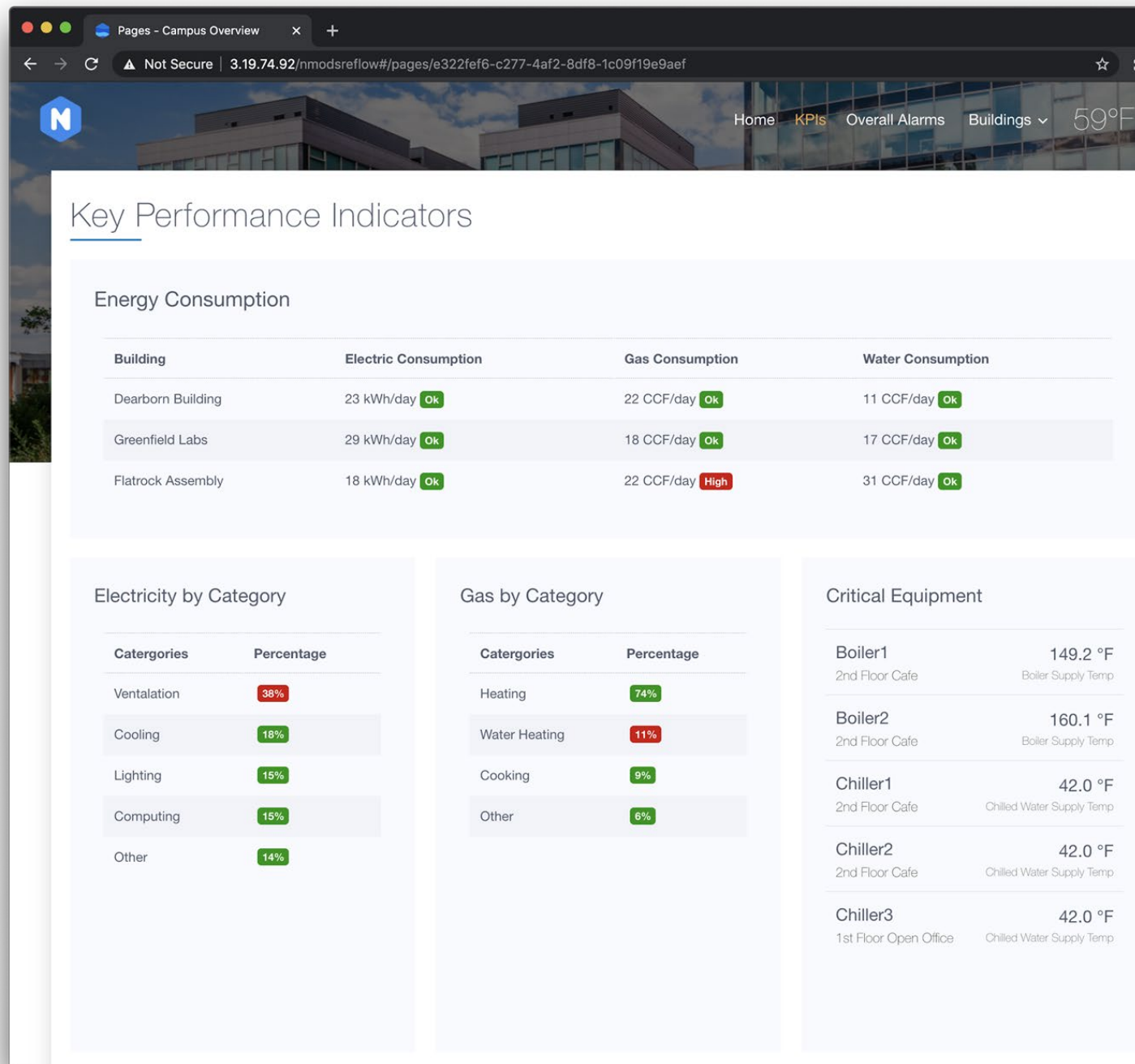
Categorize equipment by building, device type, and floor. Reflow provides a great mobile display with bread-crum navigation and easy to use point actions.





CUSTOM PAGES

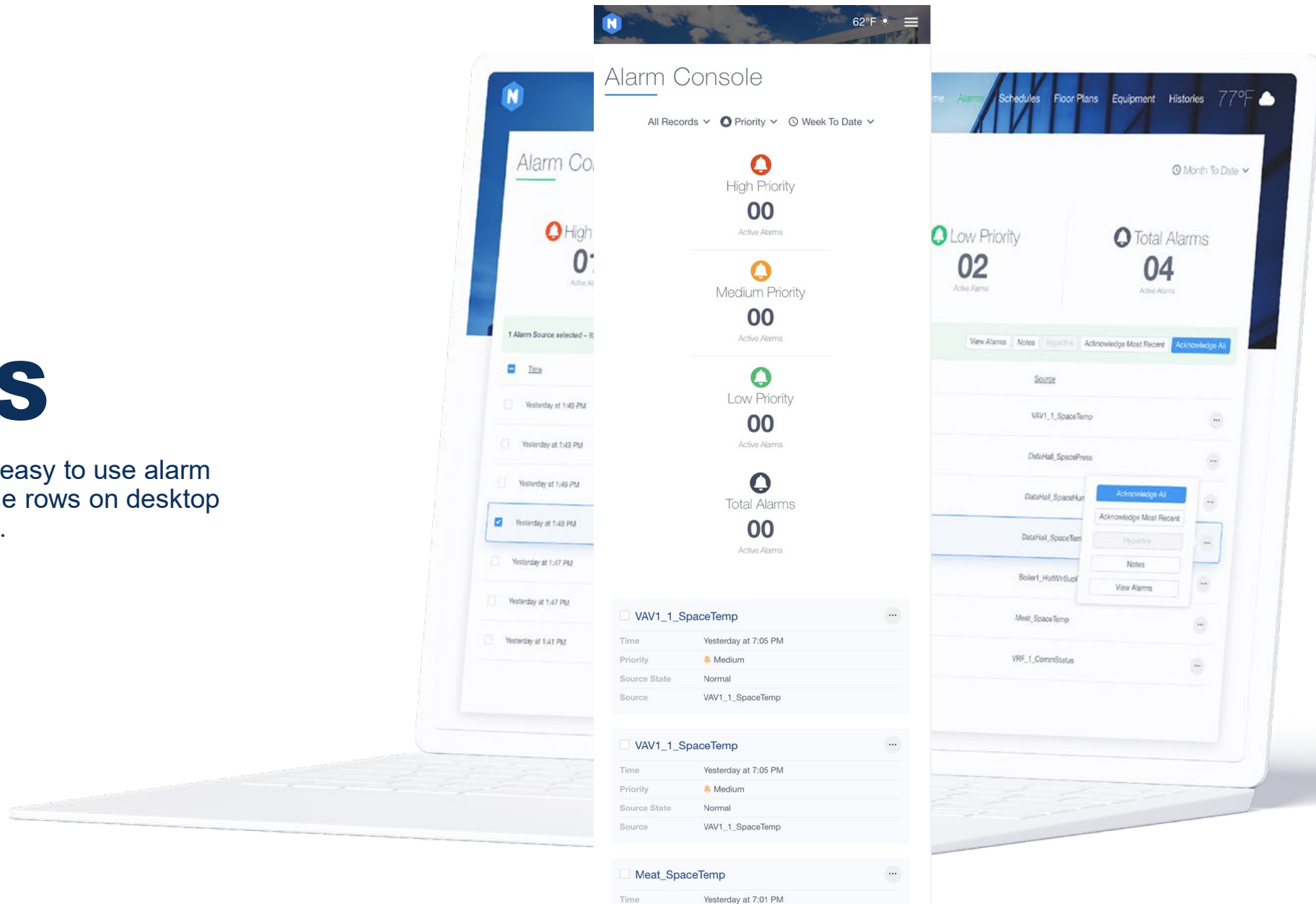
Reflow supports custom dashboards and content pages built for your system.





ALARMS

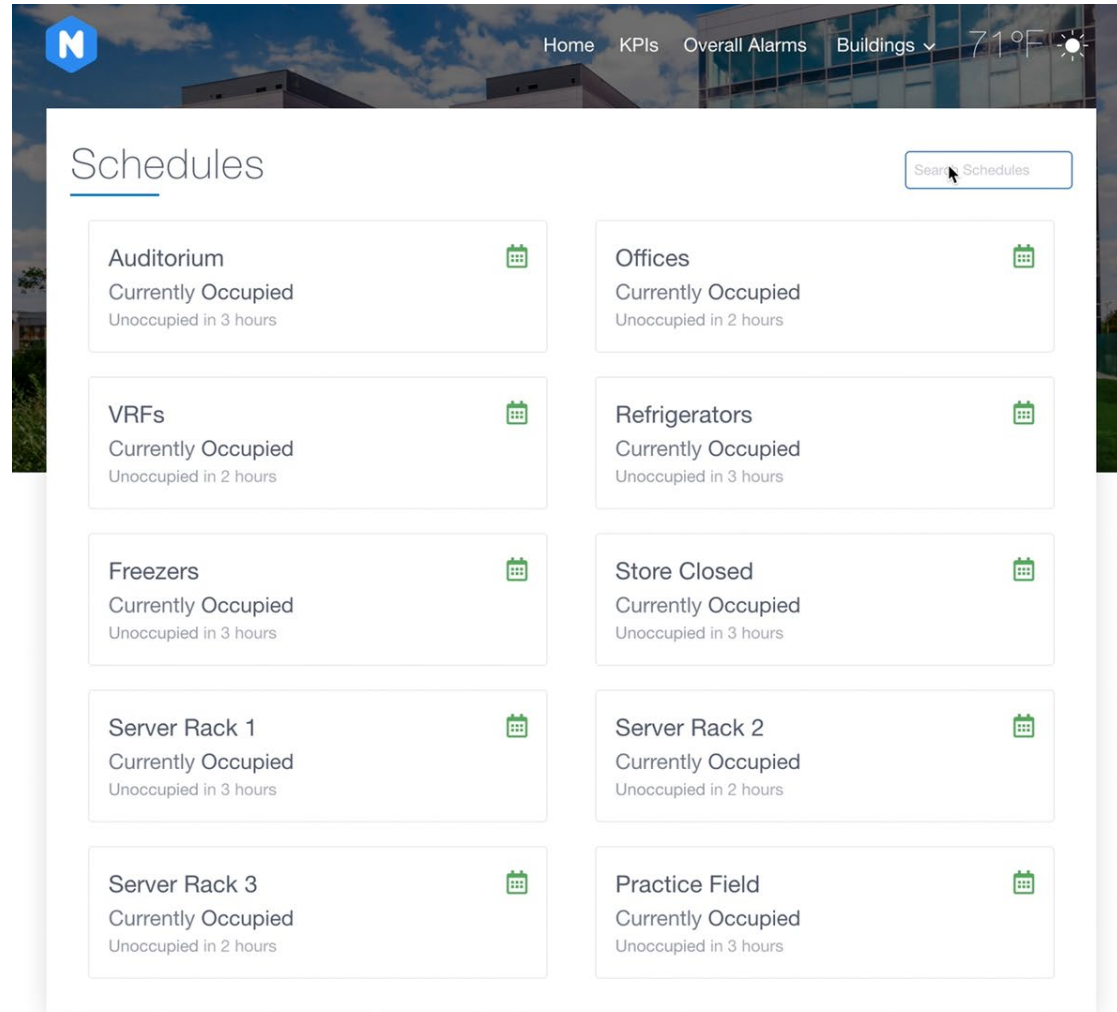
Reflow provides a modern, easy to use alarm console that transforms table rows on desktop into usable cards on mobile.





SCHEDULES

Quickly find the schedule you're looking for and easily make changes.





HISTORIES

All histories are at your fingertips your fingertips and easily searchable.

Build and share charts, export data and more.

A screenshot of the Reflow web application's "Histories" page. The page has a dark blue header with navigation links: Home, KPIs, Overall Alarms, Buildings (with a dropdown arrow), and a temperature display of 71°F with a sun icon. The main content area is titled "Histories" and includes a search bar with the text "Search 417 histories" and a filter icon. Below the search bar is a section titled "Featured Histories" containing five line charts: "Deerborn Boiler1 HWS Temp", "Greenfield Boiler2 HWS Temp", "Greenfield Chiller1 CWS Temp", "Flatrock Space Temp", and "Deerborn Space Humidity". At the bottom, there is a section titled "All Histories – 417 histories" with a pagination link "Page 1 of 14". This section displays a grid of nine history items, each with a title, location, last value, and time ago. The items are: AHU1_ChilledWtrVlvCmd (0.0 %), AHU1_DischAirPressSp (1.8 in/wc), AHU1_DischAirTemp (77.3 °F), AHU1_DischAirTempSp (68.0 °F), AHU1_EconEna (true), AHU1_EconEnaSp (60.0 °F), AHU1_HotWtrVlvCmd (68.9 %), AHU1_LowLmtAlm (false), and AHU1_MinOutAirDmprPosSp (20.0 %). Each item has a status icon (N for normal, B for bad) in a colored circle.



USER PROFILES

Customize and control the experience for users based on what's important to them and what they have access to. Assign multiple users to the same role.

Examples

Kiosk



Start a Kiosk user on a dashboard page without access to any other Reflow pages.

Admin



Have an Admin user start at a campus overview page, with access to all buildings.

Regional



Grant a Regional user access to only buildings within their region.

